



SWEDISH ENVIRONMENTAL
PROTECTION AGENCY



Sweden
Sverige

Supporting Albanian Negotiations in Environment, Chapter 27 (SANE27)

**Mbështetja e Negociatave Shqiptare në Mjedis,
Kapitulli 27 (MNSHM27)**

Stöd till Albanien i förhandlingar av miljökapitel 27

Tirana, 13-10-2020

Requirements of the EU policy and legislation regarding waste management – Trends in waste management towards a Circular Economy

PLENARY SESSION

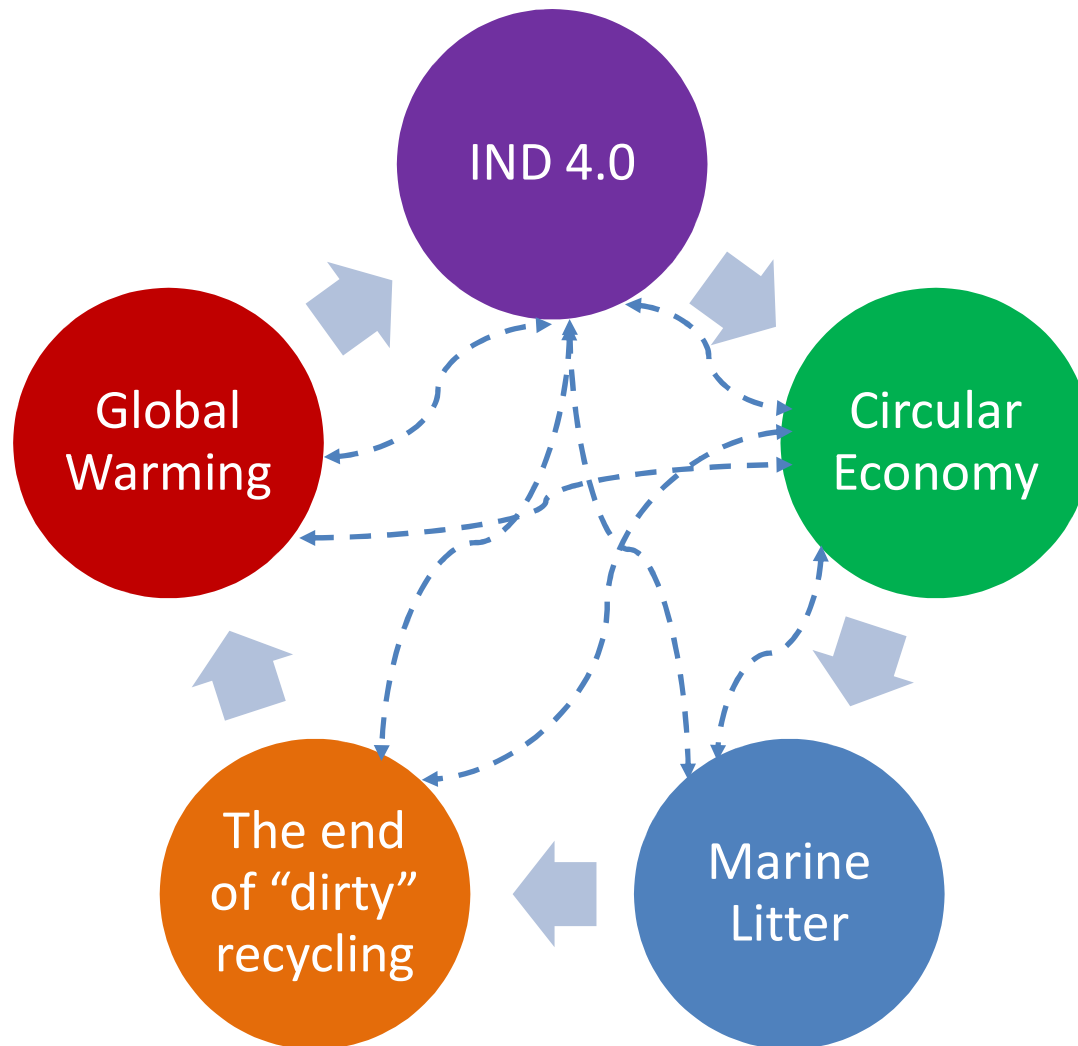
Antonis Mavropoulos

amavrop@gmail.com

Contents

- The global picture and the end of business as usual
- The European Green Deal and Circular Economy
- Towards a new paradigm in waste management

The global picture



The end of “business as usual”



COVID19 global impacts

- We believed that a global pandemic similar to Spanish flu will kill 70 million people and trim 5% of the world GDP
- Now we know that the death toll is around 1 million but the world GDP will be reduced around 8% comparing to expectations
- Our interconnected world is more vulnerable and fragile than we thought

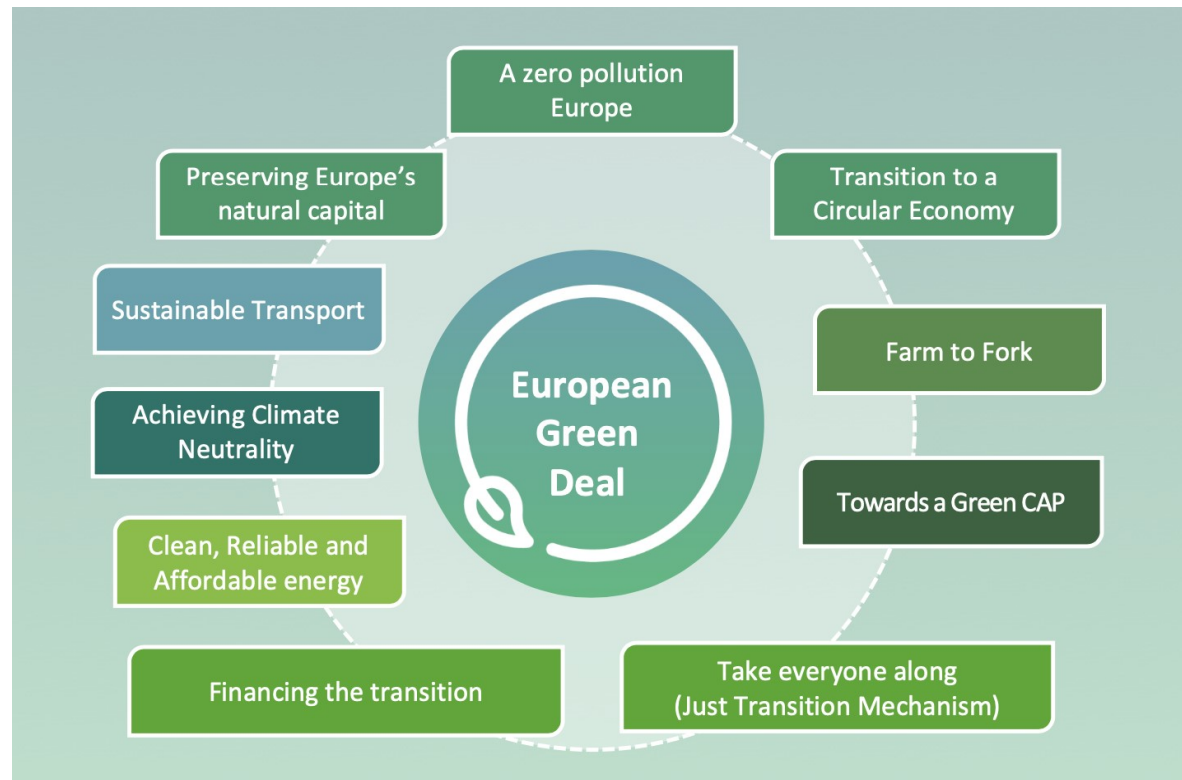
- COVID19 is another element of “the end of business as usual”. The unexpected becomes the new normal.
- COVID19 demonstrates that health protection is a global challenge that requires more and better global cooperation and coordinated response – either we will overcome it all together or we have to forget the world as we know it.
- COVID19 highlights the importance of science and data driven decision – making. It reminds everyone that using the right experts and know-how is a matter of life or death.
- Still, global pandemics both unify and fragment our world – the way we will go out of the current crisis will determine the future of global cooperation and international aid patterns.

COVID19 & Waste Management

- Pandemics are urban – MSWM is a major urban service that protects public health and environment, a major contribution to our daily living standards.
- We recognize the importance of a good health system only when we miss it – the same is true for waste management too.
- Waste management is an essential service that should be continuously delivered 24/7 during the pandemics too – governments and local authorities should recognize it and put proper measures in place e.g. UK
- MSWM during pandemics should shift its priorities

European Green Deal

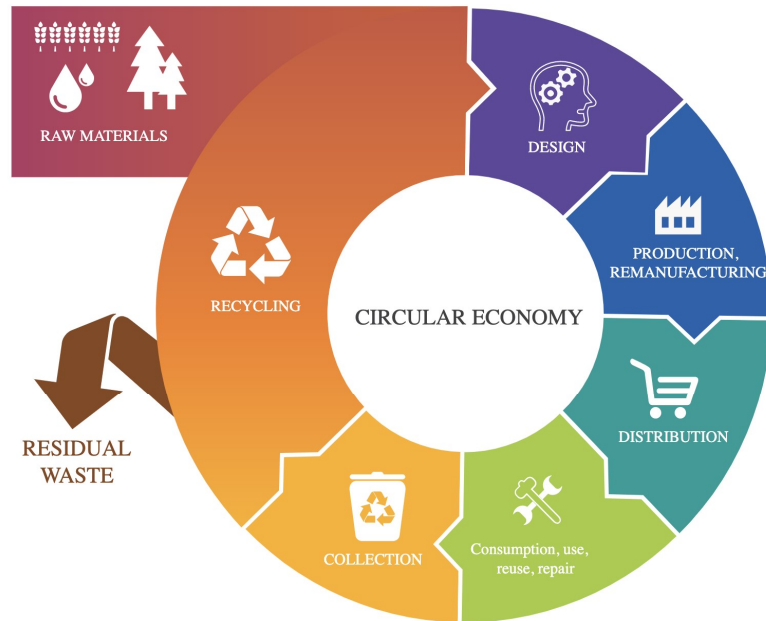
**Socially
inclusive**



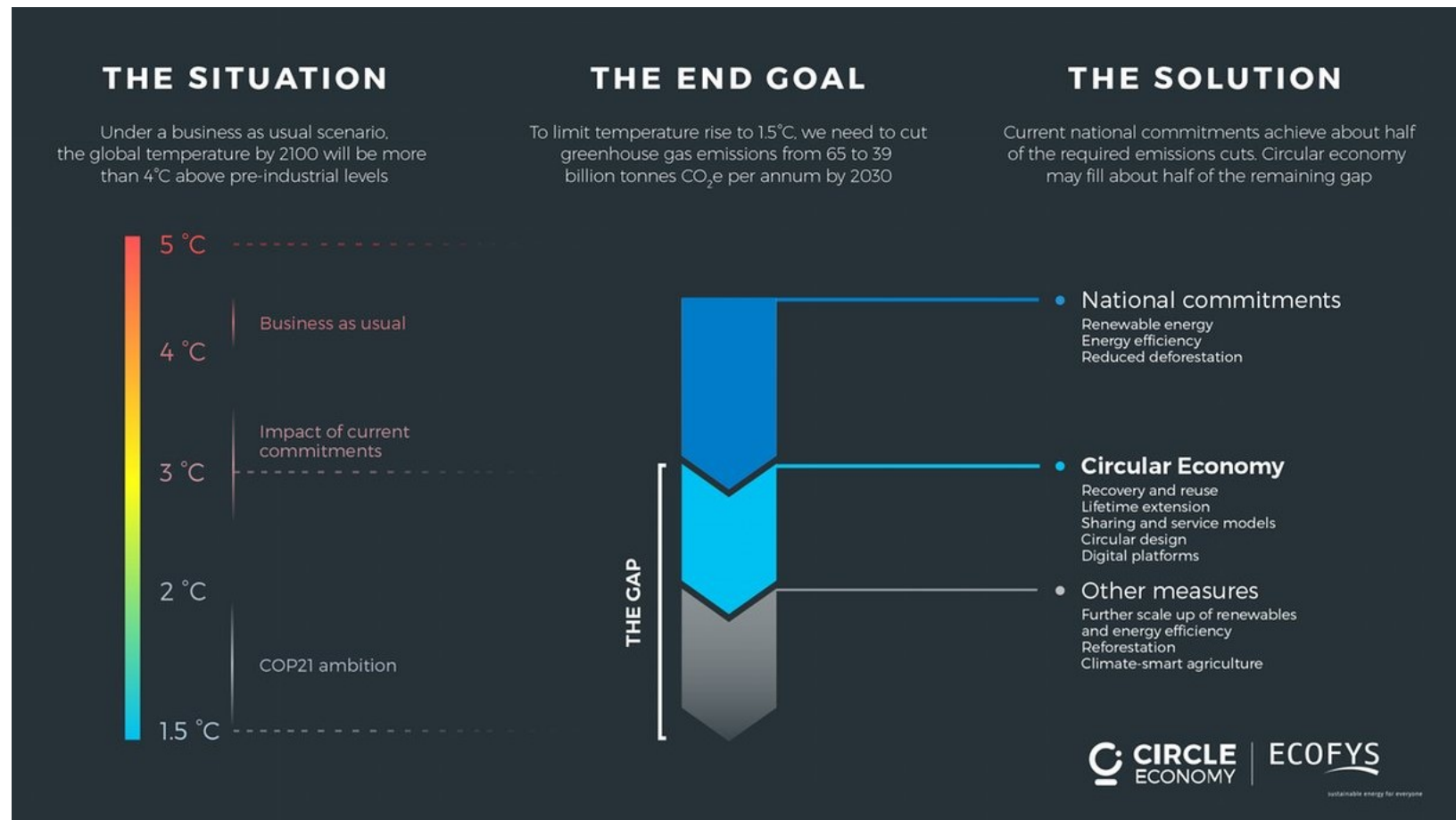
**Cleaner
Environment**

Resilience

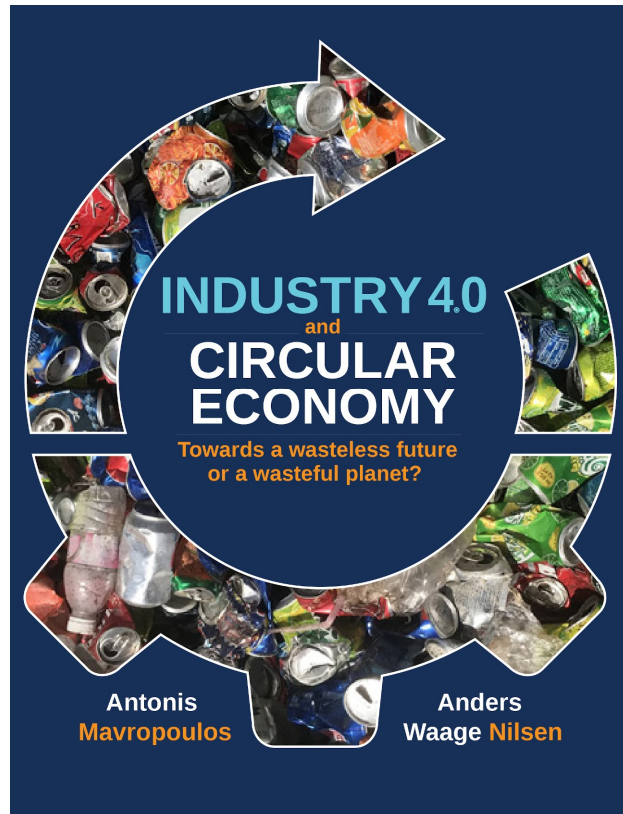
What is Circular Economy?



The importance of domino effects



Towards a new paradigm in SWM

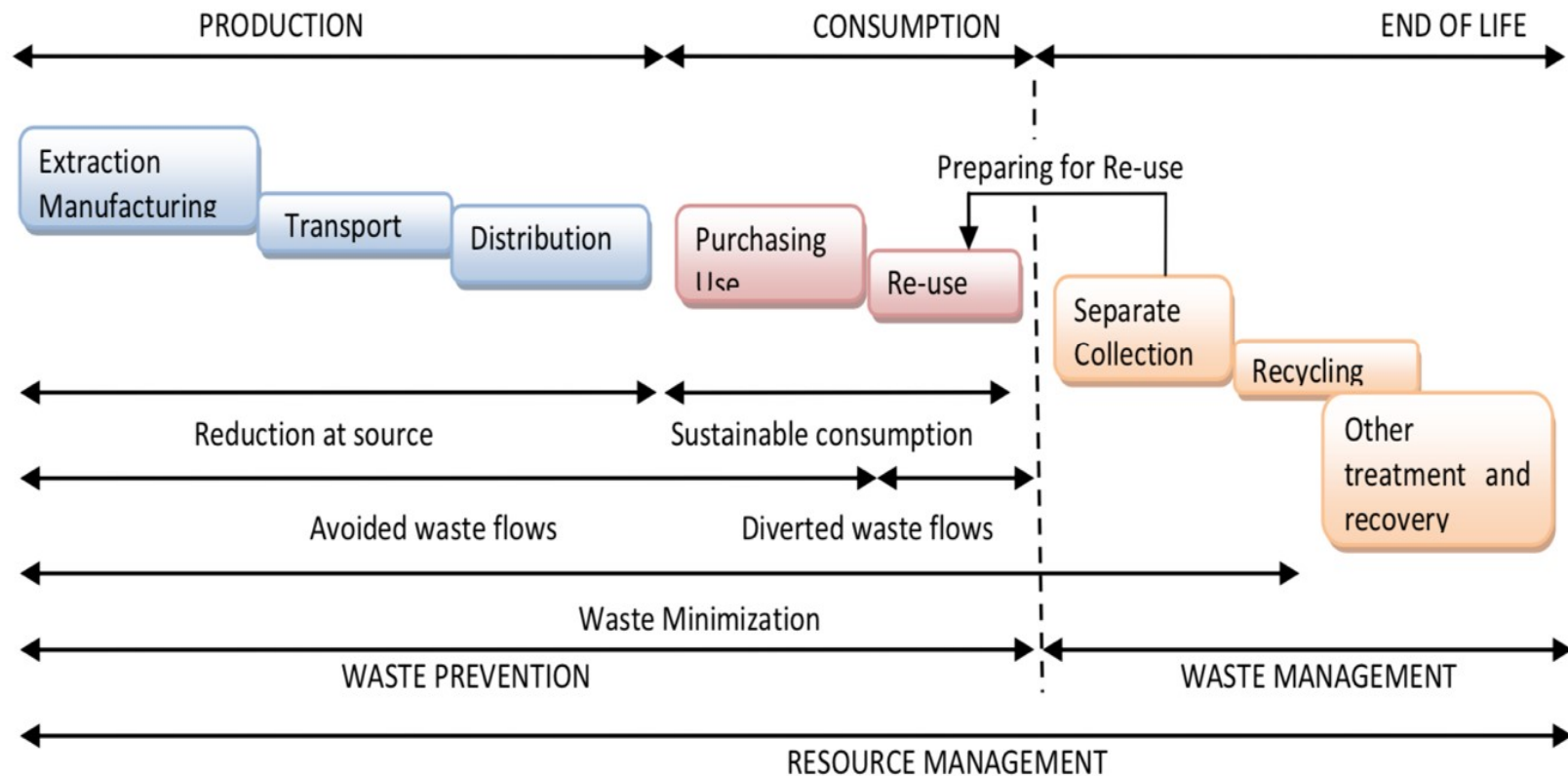


ISWA

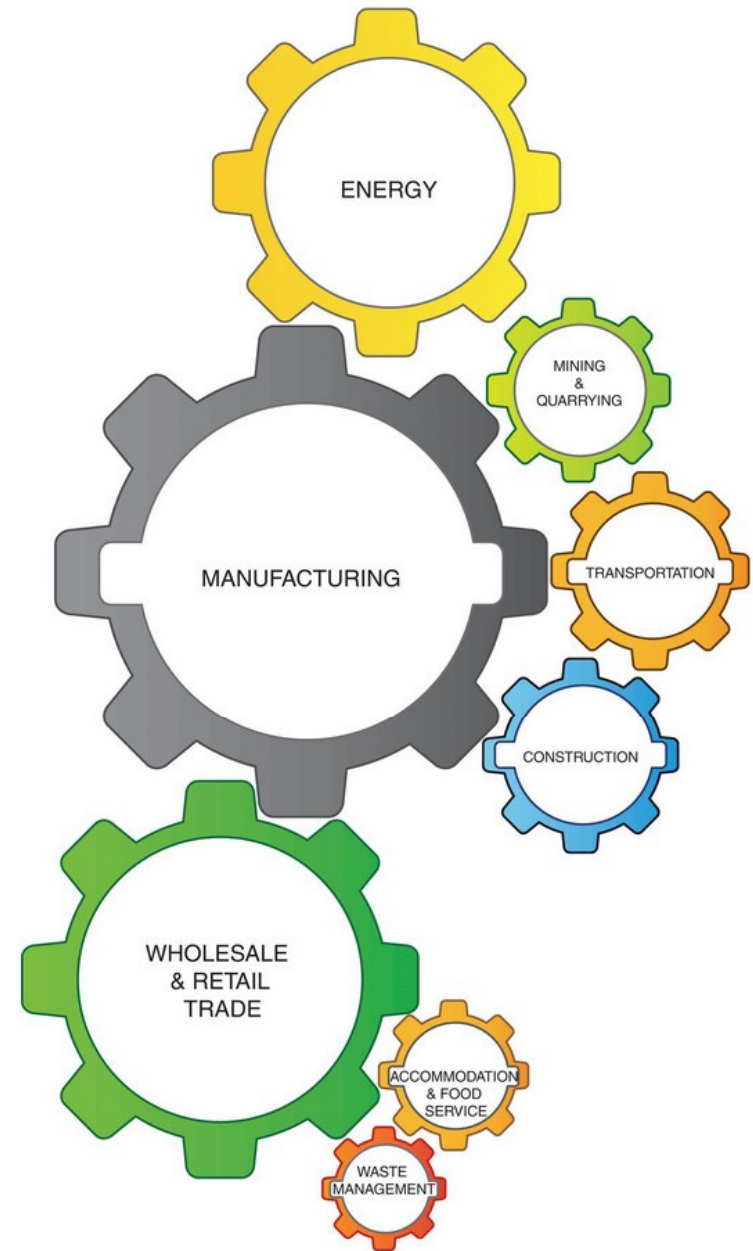
WILEY

- Waste management goes beyond waste
- Rethinking recycling in CE
- The importance of final sinks
- The challenge of digitalization and IND4.0

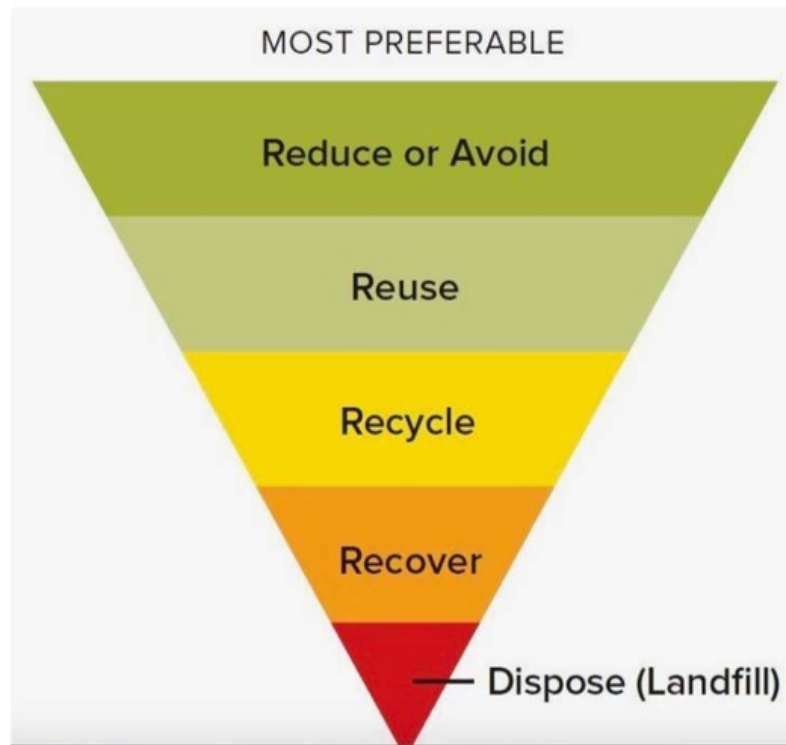
Waste management beyond waste



SWM as a Catalyst



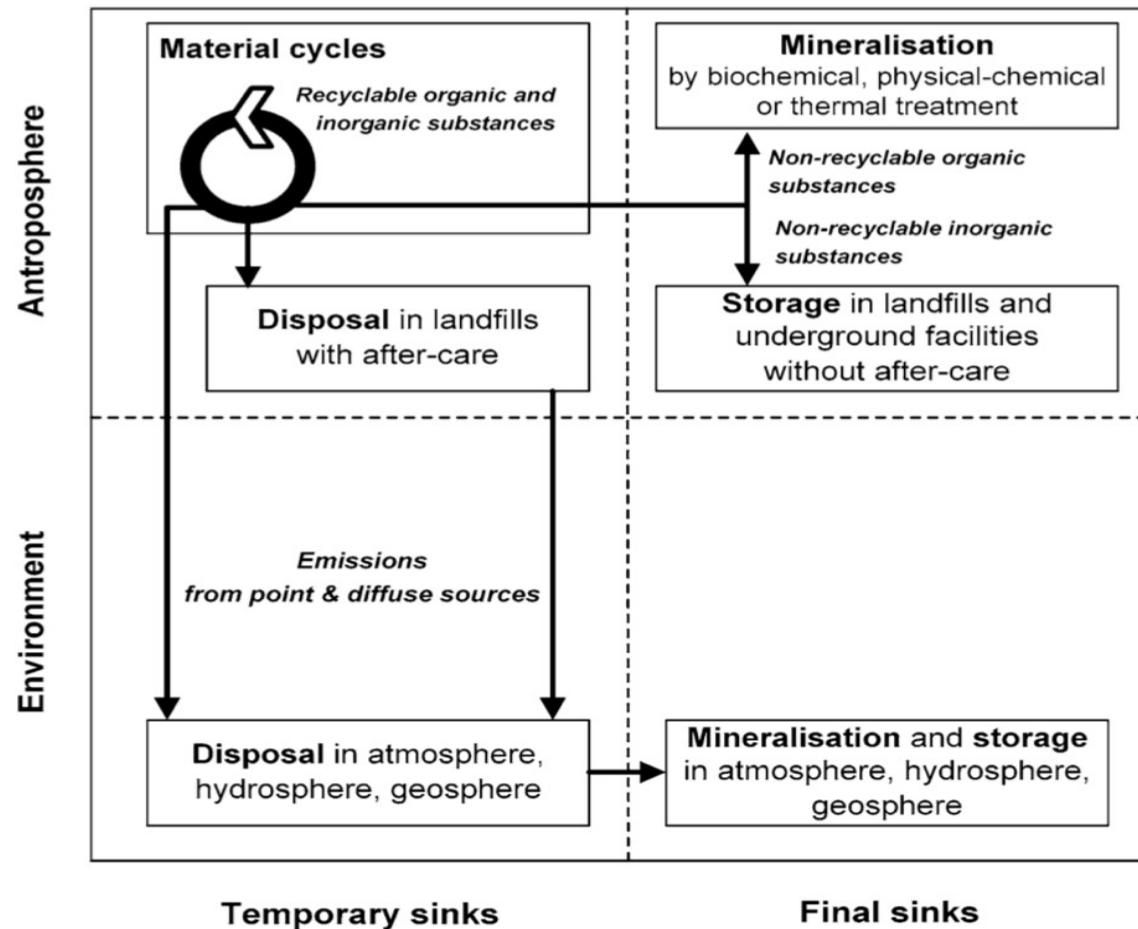
Rethinking recycling in CE



Usual misconceptions on recycling

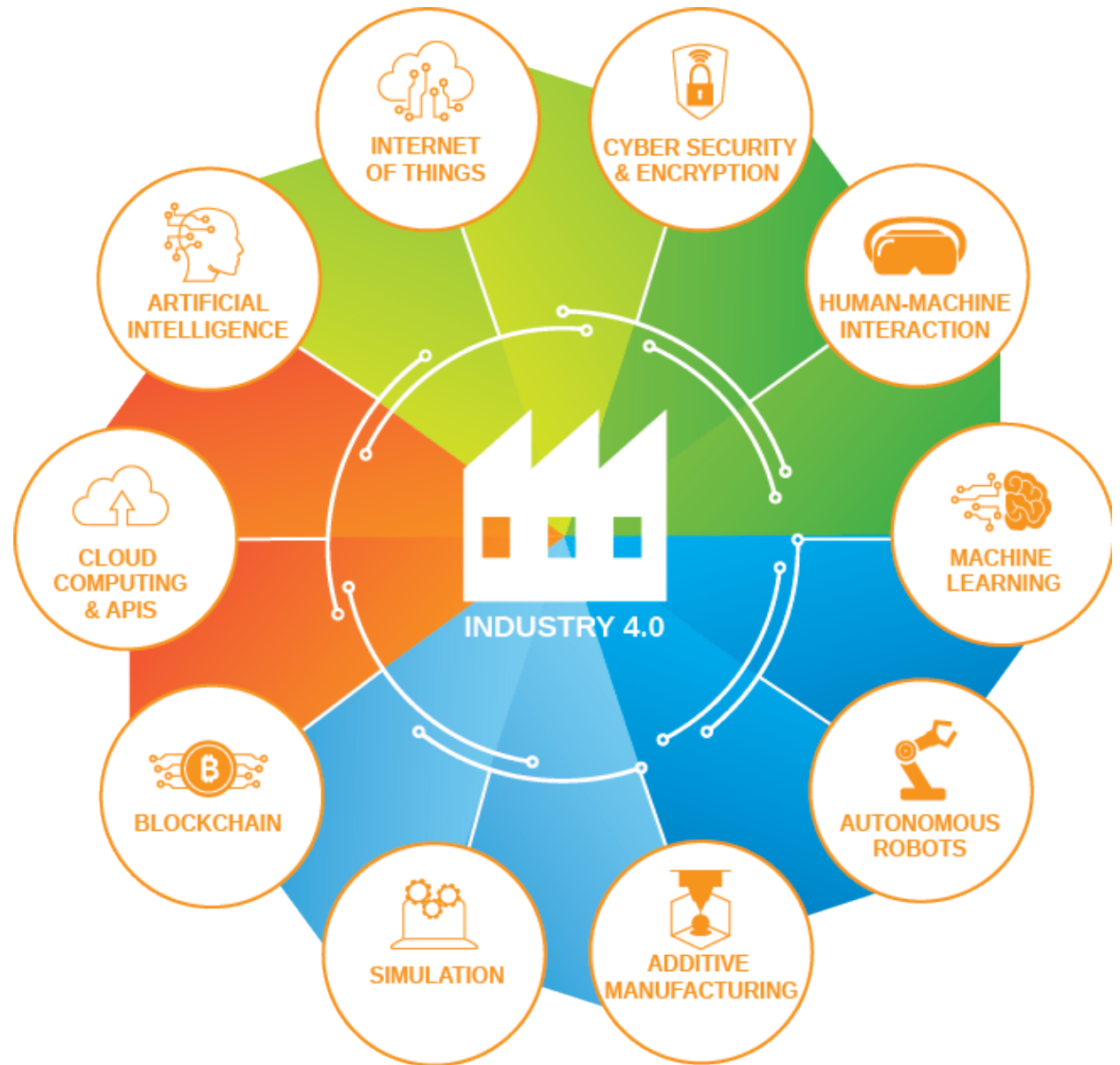
Misconceptions about recycling	
Recycling means displacement of primary materials	Market conditions will determine the fate of the recovered materials - recycling does not automatically bring the benefits of the displacement of primary materials, which are the main benefits.
Recycling materials multiple times is better than once	Cascading effects and chemical pollution undermine the recycling benefits and at a certain point the inclusion of virgin materials is definitely required, even for materials like aluminium and steel.
Closed loops are better than open ones	This is also a confusing argument because the logistics of the closed loop and the exact type of substituted materials finally determine the preference order.
Recycling is a decentralized activity with small financial cost and huge financial benefits	This is completely misleading for municipal recycling in middle and high- income countries. The cost of source separation programs and the cost of reprocessing materials in Material Recovery Facilities (MRFs) are usually 4-5 higher than the revenues from the sales of recyclables.

The importance of final sinks





The challenge of IND4.0



Instead of conclusions

